



THE EVOLUTION  
OF LACTANET  
ATLANTIC DAIRY  
PRODUCTION

ATLANTIC  
STATS

9  
1  
0  
2

The list of statistics for unpublishable herds can be found on our web site [here](#).

## TABLE OF CONTENTS

A Word from Jeff Gunn, Regional Manager .....	2
Top 25 Herd Performance Index in Canada .....	3
Top SCC herds .....	4
Top 3 HPI of Atlantic Provinces .....	5
Top Publishable Cow Records by Breed by Province .....	7
Top Publishable Herds by Breed - All Provinces .....	9
Top Publishable Herds by Herd Size - All Provinces .....	11
New Brunswick Publishable Herds .....	11
Nova Scotia Publishable Herds .....	15
Prince Edward Island Publishable Herds .....	19
Newfoundland Publishable Herds .....	24

We finance

the **PEOPLE**  
the **DREAMS**  
the **FUTURE**

of Canadian ag



fcc.ca

1-800-387-3232



## A word from Jeff Gunn REGIONAL MANAGER

During this difficult, almost surreal, period of the Covid-19 pandemic, which we must all face responsibly, dairy farmers continue to participate in the healthy nutrition of the population by managing their farms on a daily basis.

I am proud to present the first part of our annual publication The Evolution of Dairy Production in Lactanet Atlantic, which includes all the publishable data for herds and cows in all four provinces. Business leaders like to see their milk recording data and benchmarks. We try to provide them with accurate data that helps them to make decisions. Decisions are more complex than before and technology is playing a much more significant role in management, but we are human and we still need to share ideas and to validate our decisions with other human beings! For that reason, we continue to offer advisory services and the number of herds using our advisors to help interpret the test day data to monitor herd performance and profitability is growing.

I want to take this opportunity to congratulate the top Herd Performance Index herds in Atlantic for 2019 (see page 3).

We know challenges lie ahead, but we are all in this together. Partnerships are key, and we will continue to work with other industry partners to offer the Atlantic Dairy Calendar, proAction support services, and research projects to help dairy farmers meet these challenges head-on. We invite you to read the part two of this publication (2019 Stats & Tips) when it will be published in May. I look forward to continuing to work with you in this tremendously dynamic, important industry. It is an absolute honor.

Stay safe everyone.

Jeff Gunn



MADE WITH  
**100%**  
PEI MILK

**Proudly PEI Family Farm Owned**

# TOP 25

## HERD PERFORMANCE INDEX OF CANADA

The Herd Performance Index allocates points for performance in different management areas (including milk value, udder health, reproduction, heifer rearing and longevity) and is an excellent indicator of overall herd performance. It is a great tool for herds to monitor their progress from year to year and also allows herds to benchmark themselves against others, including within their unique production system (free-stall, tie-stall, robotic, organic).

We congratulate these producers, whose sustained efforts have led to an outstanding performance.

### TOP 25 HERD PERFORMANCE INDEX IN CANADA

Ranking	Province	Farm	Owner	Town	Breed
1	QC	Ferme Estermann Inc	Martin Estermann	Sainte-Agnès-de-Dundee	HO
2	ON	Heidi Farms Inc	Paul Oeggerli	Bainsville	HO
3	ON	Smilebrook Farms Inc	Thomas & Ingrid Tschudi	Mitchell	HO
4	QC	Ferme Drahoka Inc	Francis & Sylvain Drapeau	Kamouraska	HO
5	QC	Ferme Riter 2010 Inc	Richard Therrien	Saint-Sylvestre	HO
6	ON	Hendriks Dairies Ltd	Tyler Hendriks	Brucefield	JE
7	ON	Rosenhill Farm Inc	Andre Hildbrand	St Albert	HO
8	QC	Ferme Collette & Fils Inc	Nicole Boulet & Daniel Collette	Saint-Antoine-sur-Richelieu	HO
9	PE	Jewell Dale Farm Inc	Logan Jewell	Meadowbank	HO
10	ON	Alexerin Dairy Inc	Ron & Todd Nixon	Manotick	HO
11	ON	Summitholm Holsteins	Joe Loewith & Sons	Lynden	HO
12	NS	Sunny Point Farms Ltd	Phillip Vroegh	East Noel	HO
13	QC	Ferme Beljacar Inc	Carmen & Jacques Vincent	Acton Vale	HO
14	QC	Ferme Duchesne Holstein Inc	Éric Savard & Nancy Duchesne	Chicoutimi	HO
15	QC	Ferme Verdelaît Inc	Marc-André Ruel	Sainte-Hénédine	HO
16	QC	Ferme B. Lehoux & Fils Inc	Germain Lehoux	Saint-Elzéar	HO
17	ON	Gorweir Holsteins	Chris, Jessie & Brandon Weir	Guelph	HO
18	QC	Danastar Holstein	Danny Lessard	Saint-Léon-le-Grand	HO
19	QC	Ferme Trois Chemins Inc	Enrico Lefebvre	Saint-Bernard-de-Dorchester	HO
20	QC	Ferme Barjo Inc	Amélie Tremblay	Baie-Saint-Paul	HO
21	QC	Ferme Desleduc GMS SENC	Steve Leduc	Thurso	HO
22	ON	Van Engelen Dairy Farms Ltd	Mike & Ed Van Engelen	Theford	HO
23	ON	Vriesdale	Henry & Robert Velthuis	Mountain	HO
24	ON	Haag Farms Inc	Roger & Karen Haag	Brussels	HO
25	ON	Werkholm Holsteins Ltd	Frank & Kevin Werkema	Embro	HO

## TOP SCC HERDS LACTANET ATLANTIC (last test 2019\*)

Herd	Farm	Town	Province	12-Month Average SCC	12-Month Average Milk
97219	Pascobac Holsteins Inc	Belleisle Creek	NB	52	10,938
98693	Black Avon Farms Ltd	Heatherton	NS	57	12,518
98195	A & J Bent Farms Ltd	Lawrencetown	NS	60	11,169
97172	Everanne Holsteins	Norton	NB	61	11,878
98897	Jezebel Jerseys	Lanark	NS	64	7,098
98288	Bacon Farms Ltd	Amherst	NS	69	8,672
97077	Brilman Farms	Maple Ridge	NB	70	10,214
97526	Braefield Farms	Penobsquis	NB	74	7,678
98711	Fort Lands Farm Ltd	Fort Ellis	NS	74	10,495
99540	Red Oak Farms	Oyster Bed	PEI	75	11,517

\* Herd must be enrolled before January 1<sup>st</sup> of the year.

## TOP SCC HERDS BY PROVINCE (last test 2019\*)

Herd	Farm	Town	12-Month Average SCC	12-Month Average Milk
<b>PRINCE EDWARD ISLAND</b>				
99540	Red Oak Farms	Oyster Bed	75	11,517
99523	Abelaine Farms Inc	Hunter River	79	10,892
99564	Kouwenberg Farm Inc	Vernon	79	10,555
<b>NOVA SCOTIA</b>				
98693	Black Avon Farms Ltd	Heatherton	57	12,518
98195	A & J Bent Farms Ltd	Lawrencetown	60	11,169
98897	Jezebel Jerseys	Lanark	64	7,098
<b>NEW BRUNSWICK</b>				
97219	Pascobac Holsteins Inc	Belleisle Creek	52	10,938
97172	Everanne Holsteins	Norton	61	11,878
97077	Brilman Farms	Maple Ridge	70	10,214

\* Herd must be enrolled before January 1<sup>st</sup> of the year. Herds in Blue are the top 3 herds in Valacta Atlantic for SCC.

Herds in blue are the top 3 herds in Lactanet Atlantic for SCC.



FOLLOW US ON



### CONTINUING OUR LONG-TERM COMMITMENT TO DAIRY HERD IMPROVEMENT

Management Data, Benchmarks And Genetic Indexes...  
At Your Fingertips • Timely Lab Analysis • Dairy Production Experts (RD) • Much More Than Milk Recording!



valacta.com  
1-800-266-5248

# TOP 3

## HERD PERFORMANCE INDEX (HPI) OF ATLANTIC PROVINCES

### TOP 3 SCORES IN THE ATLANTIC PROVINCES

Farm Name	Owner	Town
<b>NEW BRUNSWICK</b>		
Clarke Farms	Matthew Clarke	New Canaan
Willie Leblanc & Sons Ltd	Guy & Richard Leblanc	Memramcook
Lawrence's Dairy Farm Ltd	Philemon Lawrence	Burt's Corner
<b>NOVA SCOTIA</b>		
Sunny Point Farms Ltd	Phillip Vroegh	East Noel
MacGregor Dairy Farm Ltd (tied - 2 <sup>nd</sup> position)	John MacGregor	Churchville
Black Avon Farms Ltd (tied - 2 <sup>nd</sup> position)	Tony & Erica Versteeg	Heatherton
Lone Willow Farms	Alan Cook	Bridgetown
<b>PRINCE EDWARD ISLAND</b>		
Jewell Dale Farm Inc	Logan Jewell	Meadowbank
Tiny Acres Holsteins	Logan Bryanton	Miscouche
Carruthers Farms Ltd	Mike Carruthers	Kensington
<b>NEWFOUNDLAND</b>		
Sunrise Dairy Ltd	Jeff & Olive Greening	Musgravetown
Larch Grove Farms	Ian Richardson	Cormack
N. & N. Farm Ltd	Lee Noel	Cormack

### TOP ROBOT HERD — ATLANTIC

Kipawo Holsteins 2011 Ltd	Jon Bekkers	Grand Pre, NS
---------------------------	-------------	---------------

### TOP FREE STALL HERD — ATLANTIC

Jewell Dale Farm Inc	Logan Jewell	Meadowbank, PEI
----------------------	--------------	-----------------

### TOP TIE STALL HERD — ATLANTIC

Clarke Farms	Matthew Clarke	New Canaan, NB
--------------	----------------	----------------



**Sollio  
Agriculture**



## Pump up your profits

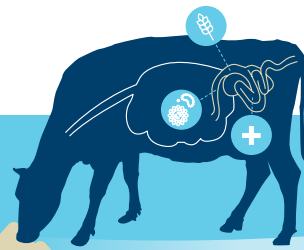
Improve the profitability of your robotic milking herd by working with our agri-advisors.

When it comes to robotic milking, success is in the details. Improve your performance, efficiency and profitability with personalized advice from our experts. As every farm is unique, we understand that the key to better profitability is a tailor-made solution adapted to your reality.



# Cremalto

**OUR NEW  
INNOVATION!**



DISCOVER WHAT CREMALTO CAN DO FOR YOU!



**trouw nutrition**  
a Nutreco company

## PROVINCIAL STATISTICS

### TOP PUBLISHABLE COW RECORDS **BY BREED** BY PROVINCE

Cow† Owner, Farm Name, Town	Sire	Age	Avg BCA	BCA M	BCA F	BCA P	Production (kg)		
							Milk	Fat	Protein
<b>NEW BRUNSWICK</b>									
<b>HOLSTEIN</b>									
Leighside Dempsey Monica Scot Gaunce, Leighside Farms Ltd, Scoudouc	Lirr Drew Dempsey	3/0	392.7	353	470	355	16,202	794	518
<b>JERSEY</b>									
<b>Shadowwave Habit Quiz</b> Alex Henderson, Ravenwood Holsteins Ltd, Irishtown	Unique Vs Habit	4/10	352.7	353	333	372	11,276	579	450
<b>AYRSHIRE</b>									
<b>Riordon's Rockstar Kit Kat</b> Patrick & John Riordon, Riordon Farms Ltd, Pokeshaw	Kamouraska Rockstar	4/6	323.7	302	325	344	10,932	484	409
<b>BROWN SWISS</b>									
<b>Gubelman Jaguar Drew</b> Joy Weir, Jolly Farmer Products, Northampton	Jaguar	2/4	296.7	273	318	299	9,213	435	353
<b>GUERNSEY</b>									
<b>Beaverwood Spruce's Fern</b> Gary & Leith West, Beaverwood Farms Inc, Dundas	Jens Gold C Blue Spruce-Et	5/2	295.3	316	281	289	11,689	519	382
<b>SHORTHORN</b>									
Oceanbrae Adventure Jo Samuel Freeze, Samuel Freeze, Newtown	Kundes Golden Logic Adventure	5/0	286.3	258	321	280	8,014	398	283
<b>NOVA SCOTIA</b>									
<b>HOLSTEIN</b>									
<b>Sunnypoint 2121 Commander</b> Phillip Vroegh, Sunny Point Farms Ltd, East Noel	Larcrest Commander-Et	2/11	419.7	399	439	421	17,085	702	585
<b>JERSEY</b>									
Jx Springdale Phantom Jenessa David Bekkers, Bekkers Farm Inc, Antigonish	Jx Springdale Spencer Phantom	2/1	349.7	354	340	355	8,627	449	327
<b>AYRSHIRE</b>									
Breckrow Rockstar Erma Bruce Sinclair, Breckrow Farm, Goshen	Kamouraska Rockstar	2/2	320.3	302	323	336	8,957	401	329
<b>SHORTHORN</b>									
Eloc Logic Chili Sandy & Dean Cole, Eloc Farm, Middle Musquodoboit	Gmc Rebel Logic Et	4/10	307.7	314	306	303	9,766	380	306
<b>BROWN SWISS</b>									
Vano Tougher Heidi Mike & Sandy Van Oirschot, Vano Farm, Antigonish	Holyland Tougher Et	3/7	263.0	259	273	257	10,065	426	350
<b>GUERNSEY</b>									
Beaverwood Lyndell's Samantha Doug & Barb McDonald, Sunnycroft Farms Ltd Milford Station	Flambeau Manor Yb Lynndell	5/9	219.0	208	229	220	7,472	416	282

† Animals highlighted in blue represent the top animal for that breed in all provinces.

DAIRY WELLNESS IS EVOLVING. ARE YOU KEEPING UP?

# THE UDDER WAY

PERSONALIZED, ON FARM DAIRY WELLNESS TRAINING

STAY UP-TO-DATE  
WITH THE LATEST UDDER  
HEALTH KNOWLEDGE  
& TECHNIQUES

**GET 3 CUSTOM-DESIGNED, FREE TRAINING SESSIONS**

Given to you at your farm by your own veterinarian.  
Take your expertise to another level and drive your bottom line.

Contact your veterinarian to find out if you're eligible or register right away at [orbeseal.ca](http://orbeseal.ca)

## PROVINCIAL STATISTICS

### TOP PUBLISHABLE COW RECORDS **BY BREED** — BY PROVINCE

Cow† Owner, Farm Name, Town	Sire	Age	Avg BCA	BCA M	BCA F	BCA P	Production (kg)		
							Milk	Fat	Protein
<b>PRINCE EDWARD ISLAND</b>									
<b>HOLSTEIN</b>									
Progenesis Suprstar Kirkwood Logan Bryanton, Tiny Acres Holsteins, Miscouche	De-Su Altasuperstar-Et	1/9	415.3	375	449	422	13,548	601	485
<b>SHORTHORN</b>									
<b>Richford Pingerly Saffron</b> Fred Barrett, Oceanbrae Farms, Miscouche	Treeton Pingerly Et	3/4	390.3	411	328	432	11,400	367	393
<b>AYRSHIRE</b>									
Ver-Dyk Decaf Samantha Jack Verhulp, Ver-Dyk Farms Ltd, Fredericton	Kamouraska Decaf-Et	3/1	314.7	317	310	317	11,057	450	364
<b>JERSEY</b>									
Calamity Jane's Petrol Sia Logan Jewell, Jewell Dale Farm Inc, Meadowbank	Barhams Petrol	3/3	289.0	283	290	294	8,097	452	317
<b>NEWFOUNDLAND</b>									
<b>HOLSTEIN</b>									
Jessiejoe Capital Gain Carrie Jeff & Olive Greening, Sunrise Dairy Ltd Musgravetown	Stantons Capital Gain	1/8	392.0	387	409	380	13,793	540	433
<b>JERSEY</b>									
Raisaview Chili Vanilla Lee Noel, N&N Farm Ltd, Cormack	Rowleys 11 Visionary Chili-ET	3/9	239.3	242	228	248	7,908	403	307

† Animals highlighted in blue represent the top animal for that breed in all provinces.

### TOP PUBLISHABLE HERDS† **BY BREED** — ALL PROVINCES

Breed, Farm Name	Location	Records	Avg BCA	BCA M	BCA F	BCA P	Milk kg	Fat kg	%	Protein kg	%
<b>AYRSHIRE</b>											
Creek Home Farm	Salisbury, NB	15	253.3	247	254	259	8,425	355	4.21	289	3.43
<b>BROWN SWISS</b>											
Eloc Farm	Middle Musquodoboit, NS	7	243.0	234	253	242	9,018	390	4.32	326	3.61
<b>GUERNSEY</b>											
Beaverwood Farms Inc	Dundas, NB	73	203.0	204	199	206	6,918	338	4.89	249	3.60
<b>HOLSTEIN</b>											
MacGregor Dairy Farm Ltd	Churchville, NS	324	324.7	317	336	321	14,167	557	3.93	457	3.23
<b>JERSEY</b>											
Ravenwood Holsteins Ltd	Irishtown, NB	10	270.3	271	259	281	7,940	411	5.18	311	3.92
<b>SHORTHORN</b>											
Oceanbrae Farms	Miscouche, PEI	59	300.0	297	309	294	8,016	337	4.20	259	3.23

† For Ayrshire, Holstein and Jersey breeds, a minimum of 10 publishable lactations is required for a publishable herd average; all other breeds require 5.

# WASTING NUTRIENTS IS LIKE THROWING MONEY OUT THE WINDOW!

“Milk urea nitrogen testing is an excellent tool. As a nutritionist, it helps me to prevent overfeeding of protein, which saves money on the farm. Also, it helps me fine tune rations in case I am underfeeding fresh cows. I recommend it on a regular basis, as the value provided far outweighs the cost.”

- DANIEL SCOTHORN, SCOTHORN NUTRITION\*

I choose to put  
“Mun-ey”  
in my pocket!

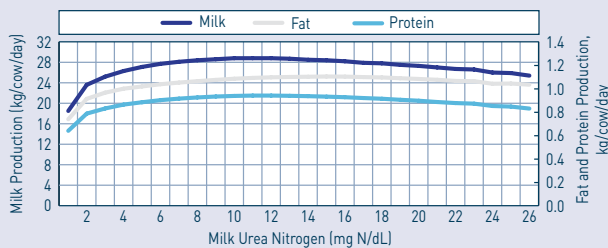


## MUN ANALYSIS

MUN analysis is a great indicator of the efficiency of protein use from a ration. The higher the concentration of urea, the larger the proportion of wasted feed protein, and the more excretion of nitrogen there is in the urine.

MUN values below 8 will result in lower production, probably due to a lack of protein availability in the rumen. Values higher than 14, however, will not translate into higher production.

MILK, FAT AND PROTEIN PRODUCTION VERSUS MUN



High values reveal a less than optimal use of feed protein, and consequently, significant nitrogen waste.



## MUN BENEFITS

- Results by stage of lactation
- Cow by cow results for an individual follow-up
- Identification of the out-of-range cases
- Comparison with the breed average performance
- Test done with your milk recording sample
- Results available 48 hours after the test



## NEGATIVE EFFECTS OF HIGH MUN

- Wasted money due to unnecessary feed costs
- Low production and low protein
- Loss of profit due to reproduction problems:
  - Embryotic death
  - Irregular intervals between breeding
  - Impact on heifer replacement



## NEGATIVE EFFECTS OF LOW MUN

- Lower production
  - Increased feed cost due to higher protein requirements
  - Poor rumen health (acidosis and limited microbial population)

## TOP PUBLISHABLE HERDS BY HERD SIZE — ALL PROVINCE

Herd Size/Farm Name	Location	Records	Avg BCA	Breed	BCA M	BCA F	BCA P	M kg
<b>SMALL HERDS (5-39 RECORDS)</b>								
Dandelion Farm	Bonshaw, PEI	30	289.3	HO	290	292	286	13,476
Hillmar Farms	North Shannonvale, NB	29	276.7	HO	268	285	277	12,342
Ravenwood Holsteins Ltd	Irishtown, NB	10	270.3	JE	271	259	281	7,940
<b>MEDIUM HERDS (40-79 RECORDS)</b>								
Cornwallis Farms Ltd	Port Williams, NS	64	312.7	HO	303	327	308	13,739
Clarke Farms	New Canaan, NB	70	307.0	HO	301	312	308	13,765
Oceanbrae Farms	Miscouche, PEI	59	300.0	MS	297	309	294	8,016
<b>LARGE HERDS (80-119 RECORDS)</b>								
Tiny Acres Holsteins	Miscouche, PEI	113	322.7	HO	304	345	319	12,016
Lindenright Holsteins	Antigonish, NS	109	304.7	HO	284	332	298	12,236
Crasdale Farms	Hunter River, PEI	97	298.7	HO	290	301	305	12,796
<b>VERY LARGE HERDS (120+ RECORDS)</b>								
MacGregor Dairy Farm Ltd	Churchville, NS	324	324.7	HO	317	336	321	14,167
Sunny Point Farms Ltd	East Noel, NS	353	306.3	HO	292	320	307	13,210
Sunrise Dairy Ltd	Musgravetown, NF	177	302.3	HO	295	320	292	12,530

## PUBLISHABLE HERD STATISTICS

### NEW BRUNSWICK PUBLISHABLE HERDS\*

	Farm Name, Town	Records Started	Publishable Records	Avg BCA	BCA M	BCA F	BCA P	M kg	F kg	P kg	Breed
1	Clarke Farms New Canaan	85	70	307.0	301	312	308	13,765	530	448	HO
2	Lawrence's Dairy Farm Ltd Burt's Corner	220	164	294.0	279	318	285	12,556	531	409	HO
3	Walkerville Farms Wards Creek	309	248	291.3	287	308	279	12,887	512	398	HO
4	Ravenwood Holsteins Ltd Irishtown	69	59	290.0	277	297	296	12,495	495	424	HO
5	Leighside Farms Ltd Scoudouc	100	88	282.0	272	299	275	12,361	502	397	HO
6	Bonnielm Farm Ltd Ford Bank	101	75	281.3	265	296	283	12,063	497	408	HO
7	Hillmar Farms North Shannonvale	134	29	276.7	268	285	277	12,342	486	406	HO
8	Ravenwood Holsteins Ltd Irishtown	11	10	270.3	271	259	281	7,940	411	311	JE
9	Everanne Holsteins Norton	97	77	264.7	259	270	265	11,888	459	387	HO
10	Lonsview Farm Ltd New Line	181	148	263.7	254	270	267	11,600	458	388	HO
11	Hazelhill Farms Sussex	318	239	262.3	255	280	252	11,620	473	366	HO
12	Christie Farms Ltd Lynnfield	71	61	257.7	253	267	253	11,502	450	366	HO

**NEW BRUNSWICK PUBLISHABLE HERDS\***

Farm Name, Town	Records Started	Publishable Records	Avg BCA	BCA M	BCA F	BCA P	M kg	F kg	P kg	Breed
13 Waldow Farms Ltd Cornhill	412	150	257.3	258	257	257	11,443	421	362	HO
14 Clearland Holsteins Searsville	82	62	257.3	253	263	256	11,510	443	369	HO
15 Presstein Holsteins Sackville	140	98	257.0	238	281	252	10,939	479	369	HO
16 Schenkels Farms Inc Whitney	655	425	256.0	244	267	257	10,851	440	364	HO
17 Intervale Dairy Farm Ltd Intervale	170	129	254.7	244	265	255	10,811	436	360	HO
18 Creek Home Farm Salisbury	19	15	253.3	247	254	259	8,425	355	289	AY
19 Waddy & Colpitts Ltd Colpitts Settlement	213	161	250.0	232	270	248	10,341	447	352	HO
20 Roy Chambers Dutch Valley	41	32	249.7	241	253	255	10,421	407	352	HO
21 Riordon Farms Ltd Pokeshaw	99	85	248.0	244	255	245	8,802	378	291	AY
22 Overlake Holsteins Dumfries	74	59	247.7	245	253	245	11,267	431	358	HO
23 Pascobac Holsteins Inc Belleisle Creek	73	60	245.0	232	264	239	10,318	437	340	HO
24 Sussex View Farm Ltd Roachville	60	47	245.0	235	264	236	10,777	449	346	HO
25 Sunset Dairy Farm Inc Norton	68	56	244.3	245	246	242	11,745	435	367	HO
26 Constantine Farms Ltd Havelock	28	24	244.0	254	227	251	7,816	377	292	JE
27 Ferme Republique St. Basile	71	56	243.3	244	238	248	8,626	346	288	AY
28 Branchview Farms Ltd Black River Bridge	72	36	242.7	237	251	240	10,716	418	343	HO
29 Boreview Farms Ltd Burton	79	66	242.0	238	242	246	10,442	395	345	HO
30 Dunphy Holsteins Ltd Keswick	63	52	240.7	230	252	240	10,707	434	353	HO
31 Dairy Sweet Holsteins Ltd River-Glade	308	178	239.7	236	243	240	10,668	408	346	HO
32 Jolly Farmer Products Northampton	31	27	238.7	220	262	234	8,380	403	311	BS
33 Ferme Cyrros Siegas	168	117	237.3	246	220	246	7,417	361	281	JE
34 Schuttens Holsteins Maugerville	61	49	236.7	235	241	234	10,998	420	350	HO
35 Samuel Freeze Newtown	11	10	236.7	231	239	240	6,702	372	263	JE
36 Brilman Farms Maple Ridge	201	160	236.0	227	250	231	10,255	418	332	HO
37 Samuel D. Freeze Newtown	51	41	231.7	226	237	232	10,451	405	339	HO

## NEW BRUNSWICK PUBLISHABLE HERDS\*

Farm, Town	Records Started	Publishable Records	Avg BCA	BCA M	BCA F	BCA P	M kg	F kg	P kg	Breed
38 <b>Kent &amp; Lorraine Allen</b> Keswick Ridge	60	48	230.0	223	247	220	9,831	404	310	HO
39 <b>Creek Home Farm</b> Salisbury	44	34	229.7	224	237	228	10,103	398	328	HO
40 <b>Northtay Farms Ltd</b> North Tay	157	136	229.3	219	240	229	10,195	414	340	HO
41 <b>Dalling Vale Jerseys Ltd</b> Waterford	74	54	228.0	233	222	229	6,775	350	252	JE
42 <b>Elmmur Holsteins Inc</b> McDougall Settlement	46	26	227.7	225	228	230	9,863	371	322	HO
43 <b>Constantine Farms Ltd</b> Havelock	63	54	226.3	227	228	224	10,512	392	329	HO
44 <b>Goodine Holsteins</b> Bear Island	59	53	223.7	215	236	220	9,826	399	319	HO
45 <b>Braefield Farms</b> Penobsquis	78	64	221.7	217	226	222	7,855	336	265	AY
46 <b>Royridge Holsteins</b> Keswick Ridge	42	38	221.7	215	229	221	10,234	403	332	HO
47 <b>Sigel Farm</b> Cornhill	11	10	221.3	220	219	225	8,192	330	294	BS
48 <b>Sigel Farm</b> Cornhill	13	13	220.3	218	225	218	9,412	362	301	HO
49 <b>Roelridge Dairy Farm Ltd</b> Mapledale	147	129	220.0	210	232	218	9,480	391	314	HO
50 <b>Graham Farms Ltd</b> Good Corner	142	112	219.7	208	232	219	9,441	392	317	HO
51 <b>Windymount Farm Ltd</b> Second North River	90	69	218.3	218	216	221	9,779	359	314	HO
52 <b>George Harvey</b> Glenvale	56	47	218.0	213	229	212	10,063	400	319	HO
53 <b>Grants Breeder Farm Ltd</b> Kars	62	49	216.0	225	201	222	6,930	338	260	JE
54 <b>Roga Farm Ltd</b> Melrose	12	11	215.0	208	210	227	6,534	357	269	JE
55 <b>Barkhof Holsteins Inc</b> Head of Millstream	105	35	214.7	203	227	214	9,802	407	327	HO
56 <b>Lilbrook Holsteins</b> Kinnear Settlement	29	24	214.3	211	221	211	9,640	377	308	HO
57 <b>Milkstream Holsteins Ltd</b> Searsville	116	73	212.3	205	223	209	9,491	385	308	HO
58 <b>Forksvie Farm Ltd</b> Sackville	53	46	211.3	205	218	211	9,766	385	319	HO
59 <b>Woodslane Holsteins</b> Nauwigewauk	177	141	210.0	207	211	212	9,393	356	307	HO
60 <b>Brownsville Farms</b> Lower Cove	480	400	208.7	210	209	207	9,703	357	303	HO
61 <b>Mark &amp; Marjorie Anderson</b> Wards Creek	19	16	208.0	217	196	211	6,703	330	247	JE

**NEW BRUNSWICK PUBLISHABLE HERDS\***

	Farm Name, Town	Records Started	Publishable Records	Avg BCA	BCA M	BCA F	BCA P	M kg	F kg	P kg	Breed
62	Cranfarm Holsteins Mount Pleasant	117	104	208.0	194	220	210	9,002	378	308	HO
63	Combination Holsteins Keswick Ridge	79	68	207.3	201	216	205	9,803	388	316	HO
64	Shore-View Holsteins Belledune	66	51	204.7	192	225	197	9,017	390	293	HO
65	Redbridge Holsteins Ltd Belleville	116	99	203.3	201	212	197	9,382	368	291	HO
66	Beaverwood Farms Inc Dundas	88	73	203.0	204	199	206	6,918	338	249	GU
67	Bullsbrow Farms Oakville	60	47	202.0	197	213	196	9,116	363	287	HO
68	Roga Farm Ltd Melrose	65	42	201.3	198	203	203	9,344	355	304	HO
69	Donnelly Holsteins Ltd Lake George	45	40	198.3	195	207	193	9,449	372	296	HO
70	Sugarhill Farms Ltd Passekeag	38	33	196.7	193	205	192	9,070	357	286	HO
71	Dykstra Farm Salisbury Second North River	101	90	196.7	192	200	198	8,954	346	293	HO
72	Charles Anderson Wards Creek	113	90	196.7	192	204	194	9,296	366	297	HO
73	Bayside Ayrshires Salmon Beach	62	60	195.3	194	197	195	6,946	289	230	AY
74	St. Nicholas Farm Mundleville	54	42	191.7	188	193	194	8,918	340	292	HO
75	J Haarsma Dairies Ltd Norton	96	50	190.0	186	195	189	8,942	347	287	HO
76	Hammond View Holsteins Ltd Upperton	61	41	187.0	187	192	182	8,648	329	267	HO
77	Prospect Acres Sackville	125	96	179.7	171	185	183	6,141	273	217	AY
78	Hallholm Farm Lower Millstream	42	34	178.0	180	179	175	8,182	303	253	HO
79	Windybrook Farm Monteagle	45	37	177.0	178	179	174	8,286	308	257	HO
80	Cedar Rock Guernseys Nauwigewauk	25	14	173.0	180	165	174	6,199	282	214	GU
81	Cedar Rock Guernseys Nauwigewauk	32	22	173.0	165	186	168	7,929	331	256	HO
82	Sugarbush Holsteins Mactaquac	50	42	169.3	163	176	169	7,811	312	255	HO
83	Titus Farm Kingston	47	38	169.0	167	174	166	7,685	297	243	HO
84	Cedar Springs Farm Inc Waterford	38	12	167.0	168	162	171	7,923	284	255	HO
85	Landslide Ayrshires Mount Middleton	80	65	158.0	161	154	159	5,775	226	187	AY

\* For Ayrshire, Holstein and Jersey breeds, a minimum of 10 publishable lactations is required for a publishable herd average; all other breeds require 5.

**NOVA SCOTIA PUBLISHABLE HERDS\***

	Farm Name, Town	Records Started	Publishable Records	Avg BCA	BCA M	BCA F	BCA P	M kg	F kg	P kg	Breed
1	MacGregor Dairy Farm Ltd Churchville	420	324	324.7	317	336	321	14,167	557	457	HO
2	Cornwallis Farms Ltd Port Williams	72	64	312.7	303	327	308	13,739	548	443	HO
3	Sunny Point Farms Ltd East Noel	427	353	306.3	292	320	307	13,210	536	443	HO
4	Lindenright Holsteins Antigonish	159	109	304.7	284	332	298	12,236	530	410	HO
5	Holmstein Farm Ltd Middle Musquodoboit	56	47	299.0	286	320	291	12,652	527	410	HO
6	Black Avon Farms Ltd Heatherton	115	86	290.3	284	301	286	12,696	499	408	HO
7	Curry Knoll Farms Ltd Wolfville	65	49	287.0	266	317	278	11,815	522	395	HO
8	Bokma Farms Ltd Shubenacadie	424	357	284.0	278	287	287	12,480	477	408	HO
9	Biggs Farms Ltd Melanson	161	124	282.7	275	294	279	12,244	485	396	HO
10	Folly River Farms Ltd Debert	105	72	278.7	276	285	275	12,872	492	407	HO
11	Lone Willow Farm Bridgetown	63	48	276.3	259	294	276	11,592	489	395	HO
12	Twin Maples Farm Clifton	87	73	270.3	264	272	275	11,827	452	393	HO
13	Pine Haven Farms Ltd Oxford	71	58	268.7	270	263	273	8,050	426	309	JE
14	Dalhousie University Agr Campus Truro	46	41	267.7	264	276	263	11,945	463	378	HO
15	West River Holsteins Antigonish	153	112	266.3	257	278	264	11,432	459	374	HO
16	Langelaan Farms Inc Aylesford	231	181	264.3	257	275	261	11,536	458	373	HO
17	Bekkers Farm Inc Antigonish	155	118	260.3	249	269	263	11,173	449	375	HO
18	Hillpeak Farm Middle Musquodoboit	123	71	260.0	252	270	258	11,655	464	378	HO
19	Bishop Farms Ltd Round Hill	212	101	259.3	247	273	258	11,291	462	376	HO
20	A & J Bent Farms Ltd Lawrencetown	151	119	258.0	251	265	258	11,472	448	375	HO
21	Harbourside Farms Antigonish	82	60	256.7	251	255	264	11,492	435	385	HO
22	Brookvilla Holsteins Whycocomagh	97	85	256.7	244	280	246	11,303	482	363	HO
23	Bayview Dairy Farm Ltd Mabou	120	97	255.7	245	266	256	10,947	443	366	HO
24	Ballam Farm Ltd Shubenacadie	241	196	255.3	251	257	258	11,494	437	376	HO

**NOVA SCOTIA PUBLISHABLE HERDS\***

	Farm Name, Town	Records Started	Publishable Records	Avg BCA	BCA M	BCA F	BCA P	M kg	F kg	P kg	Breed
25	Belcher Holsteins Ltd Belmont	102	82	253.7	239	267	255	11,141	459	377	HO
26	David Bents Farms Ltd Middleton	130	84	253.3	252	244	264	11,326	406	377	HO
27	Lellavan Farms Maitland	141	118	252.7	247	265	246	11,214	447	354	HO
28	Braeview Farms East Noel	42	38	251.0	247	251	255	11,223	423	369	HO
29	Fort Lands Farm Ltd Fort Ellis	62	51	249.0	246	257	244	1,1117	431	351	HO
30	Scothorn Farms Ltd Hardwood Lands	722	610	248.3	243	258	244	10,958	431	349	HO
31	J & L Oostvogels Antigonish	59	47	248.0	242	252	250	11,182	434	368	HO
32	Scotchill Farm James River	46	34	245.0	248	247	240	11,564	426	356	HO
33	Trivee Farms Ltd St-Andrews	102	83	245.0	240	250	245	11,052	426	359	HO
34	Eloc Farm Middle Musquodoboit	51	40	244.3	236	252	245	11,073	438	365	HO
35	Musquie Valley Farms Middle Musquodoboit	30	25	243.3	228	264	238	10,799	467	357	HO
36	Kennvale Farms Gaspereau	67	48	243.3	234	251	245	10,669	424	355	HO
37	Eloc Farm Middle Musquodoboit	8	7	243.0	234	253	242	9,018	390	326	BS
38	Musquie Valley Farms Middle Musquodoboit	26	22	242.0	240	245	241	7,496	415	286	JE
39	Betula Farms North Salem	62	48	242.0	221	261	244	10,152	442	354	HO
40	Oostdale Holsteins Antigonish	63	47	241.3	231	248	245	11,282	448	378	HO
41	Springauff Farm Lunenburg	28	24	240.7	252	211	259	11,935	370	386	HO
42	Sanhaven Farms Ltd Antigonish	72	60	240.0	236	245	239	11,310	436	361	HO
43	Centurymac Farm Westville	124	93	239.3	231	246	241	10,252	405	342	HO
44	A & J Bent Farms Ltd Lawrencetown	16	11	238.0	230	242	242	7,255	409	288	JE
45	Springauff Farm Lunenburg	16	14	236.7	242	212	256	7,684	363	306	JE
46	Breckrow Farm Goshen	20	16	236.3	226	251	232	10,102	416	330	HO
47	Lonelymaple Holsteins Upper Stewiacke	97	79	236.3	232	242	235	11,404	440	365	HO
48	Pineriver Farms Ltd Inverness County	67	49	236.0	224	248	236	10,243	419	343	HO
49	Lindoord Holsteins Heatherton	81	69	236.0	224	260	224	9,987	431	318	HO

# Your Numbers Tell a Powerful Story

“ Three years ago, I might have looked at the SCC report within 2-3 weeks of the test. With the value that my Lactanet advisor is offering now through the interpretation of the data, we look forward to the arrival of the reports and immediately review them to help manage and monitor herd performance. ”

- ROBBIE MACGREGOR, MacGregor Dairy Farm Ltd., Churchville, NS



**NOVA SCOTIA PUBLISHABLE HERDS\***

Farm Name, Town	Records Started	Publishable Records	Avg BCA	BCA M	BCA F	BCA P	M kg	F kg	P kg	Breed
50 <b>Marshcrest Farms Inc</b> North Grand Pre	125	99	229.7	219	237	233	9,720	390	330	HO
51 <b>Bidalosy Farms Ltd</b> Beaver Brook	151	121	227.7	223	236	224	10,047	394	322	HO
52 <b>Sunnycroft Farms Ltd</b> Milford Station	51	42	226.3	227	222	230	10,529	381	338	HO
53 <b>Vano Farm</b> Antigonish	34	28	225.3	231	217	228	10,720	373	335	HO
54 <b>Greenough Family Farms</b> Newport	51	20	225.3	216	236	224	10,291	416	337	HO
55 <b>Patterson Farms Ltd</b> Wolfville	61	48	225.0	220	234	221	9,767	385	312	HO
56 <b>Breckrow Farm</b> Goshen	67	56	223.7	212	233	226	7,289	330	254	AY
57 <b>Northumberland Dairy Farm</b> Port Howe	39	35	223.7	220	234	217	10,130	400	317	HO
58 <b>Valleyside Farm</b> Upper Stewiacke	42	35	223.3	215	235	220	9,940	404	324	HO
59 <b>Rankinville Farms</b> Mabou	49	41	223.0	208	237	224	9,470	400	323	HO
60 <b>Barraville Holsteins</b> Antigonish	50	29	218.0	213	217	224	9,873	373	329	HO
61 <b>Clewis Farms</b> Middleton	61	53	217.7	214	226	213	9,789	382	309	HO
62 <b>Milferns Holsteins</b> Lower Onslow	44	34	217.0	213	221	217	9,890	381	320	HO
63 <b>Bayferg Holsteins</b> Pictou	135	101	213.7	208	220	213	9,877	386	321	HO
64 <b>Lake Mabou Farms Ltd</b> Mabou	53	37	211.0	204	219	210	9,340	371	305	HO
65 <b>Carrollview Holsteins</b> Milford-Station	63	56	210.7	203	218	211	9,786	388	320	HO
66 <b>Churchill Bros Ltd</b> South Chegoggin	93	75	210.7	205	216	211	9,549	374	313	HO
67 <b>Wilsonburg Farm</b> Whycocomagh	71	51	210.3	204	218	209	9,794	385	317	HO
68 <b>Glenn Holsteins</b> Antigonish	66	50	209.7	210	212	207	9,492	355	297	HO
69 <b>Bovidae Farms Inc</b> Falmouth	79	12	207.3	204	215	203	10,114	392	316	HO
70 <b>Broad Cove Farm Ltd</b> Burntcoat, Noel	33	27	206.7	207	206	207	9,794	363	311	HO
71 <b>Curtmar Farms Ltd</b> Fort Ellis	343	222	206.3	203	214	202	9,303	363	295	HO
72 <b>Bacon Farms Ltd</b> Amherst	71	53	206.0	196	216	206	8,813	361	295	HO
73 <b>Blitz Holsteins Inc</b> Antigonish	79	56	204.3	201	210	202	8,768	341	281	HO
74 <b>Vano Farm</b> Antigonish	7	7	203.0	206	201	202	8,571	335	294	BS

## NOVA SCOTIA PUBLISHABLE HERDS\*

Farm Name, Town	Records Started	Publishable Records	Avg BCA	BCA M	BCA F	BCA P	M kg	F kg	P kg	Breed
75 Loleaf Farm North River	66	58	201.0	197	206	200	9,404	364	302	HO
76 Vermeulen Agricultural Company Princeport	33	22	200.7	198	206	198	8,857	340	282	HO
77 Brosendale Farms Whycomomagh	18	12	199.0	191	205	201	8,397	337	283	HO
78 Riverbend Ayrshires Tatamagouche	35	15	195.0	194	187	204	6,886	273	239	AY
79 Hilden Farms Ltd Brookfield	58	52	189.0	189	187	191	8,889	325	285	HO
80 Hilltop Dairy/Poultry Farm North Sydney	58	46	188.3	183	198	184	8,248	331	264	HO
81 Wilsoncrest Holsteins Stewiacke	98	82	188.3	184	200	181	8,608	347	269	HO
82 Leckbrook Brookfield	42	18	188.0	186	192	186	8,227	316	262	HO
83 Harbourfront Holsteins Lanark	25	17	183.7	179	192	180	8,629	342	274	HO
84 Granvalley Farm Granville Beach	51	33	183.7	179	184	188	8,648	329	288	HO
85 Charmine Holsteins Wilmot	33	26	178.7	174	185	177	8,398	330	270	HO
86 Marsh Farms Newport	80	29	177.3	175	180	177	8,002	304	256	HO
87 Brosendale Farms Whycomomagh	44	37	176.0	180	165	183	5,114	252	198	JE
88 Cliffside Farms Chebogue	78	71	174.3	175	169	179	8,143	290	263	HO
89 Candelora Holsteins Sydney	11	10	143.3	136	150	144	6,390	261	214	HO

\* For Ayrshire, Holstein and Jersey breeds, a minimum of 10 publishable lactations is required for a publishable herd average; all other breeds require 5.

## PRINCE EDWARD ISLAND PUBLISHABLE HERDS\*

Farm Name, Town	Records Started	Publishable Records	Avg BCA	BCA M	BCA F	BCA P	M kg	F kg	P kg	Breed
1 Tiny Acres Holsteins Miscouche	165	113	322.7	304	345	319	12,016	506	402	HO
2 Oceanbrae Farms Miscouche	78	59	300.0	297	309	294	8,016	337	259	MS
3 Crasdale Farms Hunter River	120	97	298.7	290	301	305	12,796	491	428	HO
4 Carruthers Farms Ltd Kensington	147	109	296.3	286	305	298	12,623	502	419	HO
5 Royalwater Holsteins Mt Stewart	189	147	294.3	296	293	294	13,440	493	425	HO
6 Dandelion Farm Bonshaw	40	30	289.3	290	292	286	13,476	502	422	HO
7 MacBeath Farms Ltd Marshfield	151	105	287.0	278	306	277	12,726	519	403	HO

PRINCE EDWARD ISLAND PUBLISHABLE HERDS\*

Farm Name, Town	Records Started	Publishable Records	Avg BCA	BCA M	BCA F	BCA P	M kg	F kg	P kg	Breed
8 Dock Road Dairy Alberton	77	59	283.7	278	289	284	12,465	479	403	HO
9 Jewell Dale Farm Inc Meadowbank	129	104	282.0	271	298	277	12,423	507	403	HO
10 Reeves Farm Inc Freetown	116	88	280.0	265	290	285	11,898	481	407	HO
11 Hoff Dairy Inc Hunter River	68	45	276.3	263	296	270	11,882	496	388	HO
12 Frizzells Farm Inc Hunter River	336	231	274.3	267	283	273	11,910	468	388	HO
13 Winterbay Farm Inc Mount Stewart	133	108	274.0	264	284	274	11,922	474	394	HO
14 Pondsedge Holsteins Souris	396	338	273.3	268	282	270	11,949	466	384	HO
15 Red Oak Farms Oyster Bed	78	51	266.0	257	277	264	11,170	444	364	HO
16 Abelaine Farms Inc New Glasgow	43	36	262.0	248	276	262	10,963	453	371	HO
17 Sandysrae Farms Montague	102	71	256.3	245	276	248	10,910	456	352	HO



**CLARENCE**  
FARM SERVICES LIMITED

Phone number 1-800-565-4314  
Fax 1-902-893-1652



OptiLac determining  
"Profitable Custom Solutions  
for your *herd*"



Contact your local Purina Dealer and learn more about this exciting tool and how your herd can benefit from the OptiLac Difference!

[www.clarencefarmservices.ca](http://www.clarencefarmservices.ca)



\*Copyright © 2009 Agribands Purina Canada Inc. All rights reserved.

There is **big money** involved in dairy production planning!



*The quota constitutes the most important part of a dairy farm's market value.*

Ask your technician about **PLANI-LACTA**  
or call **1-800-266-5248**

### What does it do for you?

- Keep track of pregnancies, animals entering or leaving the herd, and the true output from your cows.
- Get a precise estimate of total milk production in the coming months.
- An ideal way to anticipate problems and find solutions before they arise.
- A flexible tool to help you to optimize the use of quota over the course of the year.

### Dairy production planning is like driving a car!

You keep your eyes on the road a good distance ahead of you and you make frequent small adjustments instead of making sharp turns, accelerating at the last minute and slamming on the brakes. All things considered, it's less stressful, much safer and somewhat easier on the pocketbook!



Follow us on



**PRINCE EDWARD ISLAND PUBLISHABLE HERDS\***

	Farm Name, Town	Records Started	Publishable Records	Avg BCA	BCA M	BCA F	BCA P	M kg	F kg	P kg	Breed
18	Howardvale Holsteins Breadalbane	322	226	253.0	244	260	255	10,786	426	360	HO
19	Blue Diamond Farm Kinkora	104	73	252.3	236	273	248	10,791	464	362	HO
20	Frank MacDonald Inc Crapaud	64	52	250.7	239	265	248	11,064	455	364	HO
21	Extondale Farms Ltd Oyster Bed	125	90	249.0	235	264	248	10,486	438	353	HO
22	Forever Schoon Farms Vernon	92	64	249.0	244	252	251	8,582	363	290	AY
23	Karma Farms Albany	89	58	248.0	235	266	243	10,591	443	349	HO
24	Birkentree Holsteins Hunter River	122	84	247.7	235	270	238	10,435	446	337	HO
25	Brackley Farm Brackley	54	44	245.7	232	261	244	10,349	431	346	HO
26	Tabinta Farms Mount Stewart	97	73	245.0	229	261	245	10,278	435	350	HO
27	Kouwenberg Farm Inc Vernon	353	255	244.3	232	261	240	10,233	428	337	HO
28	Peaceville Farm Oleary	68	53	243.7	236	253	242	10,886	432	355	HO
29	Sunny Meadow Farms Inc North Milton	114	89	243.3	233	252	245	10,804	434	359	HO
30	Sunfarm Canoe Cove	40	30	240.0	230	248	242	11,458	459	383	HO
31	Mactalla Holsteins Bonshaw	137	107	239.3	232	243	243	10,589	410	352	HO
32	Eastside Farm Inc Frenchfort	102	87	238.3	230	252	233	10,348	421	333	HO
33	Duitman Dairy York	114	78	236.0	224	244	240	9,812	399	336	HO
34	Ver-Dyk Farms Ltd Fredericton	53	44	235.3	231	247	228	8,444	369	274	AY
35	Calimbra Farms New Argyle	53	40	234.0	227	236	239	10,200	393	342	HO
36	Craggan Farms Ltd Marshfield	72	59	233.3	228	245	227	10,501	420	332	HO
37	Bernadale Holstein Richmond	83	65	233.0	224	241	234	10,408	416	345	HO
38	Shady Lane Farms Vernon Bridge	130	100	231.7	225	246	224	10,095	408	319	HO
39	MacInnis Brothers Farms Ltd St Peters Bay	50	44	231.0	223	235	235	10,117	393	337	HO
40	Adi Dairy Inc North Winsloe	93	71	230.7	229	233	230	10,363	393	332	HO
41	Weekstown Holsteins Hunter River	87	68	229.7	220	246	223	10,045	416	324	HO

**PRINCE EDWARD ISLAND PUBLISHABLE HERDS\***

Farm Name, Town	Records Started	Publishable Records	Avg BCA	BCA M	BCA F	BCA P	M kg	F kg	P kg	Breed
42 <b>Gardenvale Farms Inc</b> Frenchfort	70	56	229.0	221	246	220	10,328	424	326	HO
43 <b>Nordale Farm</b> Richmond	96	81	228.0	216	237	231	9,543	388	326	HO
44 <b>Martin &amp; Marielle De Backer</b> Springfield	67	51	226.0	220	237	221	9,872	393	315	HO
45 <b>Bayside Farms</b> Richmond	62	38	224.7	217	231	226	10,078	398	332	HO
46 <b>Aldercourt Holsteins</b> Springvale	64	49	223.7	208	255	208	9,602	435	304	HO
47 <b>Redview Holsteins &amp; Jersey</b> Kensington	25	23	223.3	225	218	227	6,126	322	235	JE
48 <b>Redview Holsteins &amp; Jersey</b> Kensington	59	36	222.7	217	231	220	9,854	389	317	HO
49 <b>Ver-Dyk Farms Ltd</b> Fredericton	11	11	221.7	216	237	212	10,008	407	312	HO
50 <b>Tween Bays Farms</b> Vernon	157	110	221.0	211	229	223	9,891	398	331	HO
51 <b>Newgreen Farms</b> Breadalbane	67	45	220.0	209	232	219	9,713	400	324	HO
52 <b>Siegriest-Cyr Farm</b> Wellington	48	41	219.3	212	231	215	10,211	411	327	HO
53 <b>Lilac Lodge Holsteins</b> North Wiltshire	46	43	215.0	201	228	216	9,660	405	328	HO
54 <b>Weeksdale Farm</b> Breadalbane	88	57	215.0	213	214	218	10,028	373	325	HO
55 <b>Gorrill Family Farm Inc</b> Tyne Valley	44	38	214.7	210	214	220	9,725	368	323	HO
56 <b>East River Farms</b> Marshfield	123	55	213.3	207	219	214	8,858	348	291	HO
57 <b>MacSlope Farms Inc</b> Mount Stewart	71	62	211.0	210	216	207	9,803	374	308	HO
58 <b>John Dennis</b> Tyne Valley	53	49	210.7	195	224	213	9,018	384	313	HO
59 <b>Mull Na Beinne Farms Ltd</b> Kensington	75	60	209.0	196	220	211	8,899	372	305	HO
60 <b>Hughes Hill Farms</b> Bonshaw	20	17	205.0	201	222	192	8,233	340	252	HO
61 <b>Yorkton Farms</b> York	78	65	203.0	197	217	195	9,220	376	288	HO
62 <b>Skyhi Holsteins</b> Springvale	48	37	201.7	199	213	193	8,986	356	276	HO
63 <b>Algonquin Holsteins</b> York	44	39	200.0	196	205	199	9,321	361	301	HO
64 <b>Auchinleck Farms Ltd</b> Bedeque	73	53	198.7	197	203	196	8,833	336	279	HO
65 <b>Cavendish Dairy Farms Inc</b> Hunter River	61	52	197.0	196	204	191	9,162	354	284	HO
66 <b>Centrewood Holsteins</b> Kensington	40	33	194.0	187	203	192	9,061	363	294	HO

## PRINCE EDWARD ISLAND PUBLISHABLE HERDS\*

Farm Name, Town	Records Started	Publishable Records	Avg BCA	BCA M	BCA F	BCA P	M kg	F kg	P kg	Breed
67 Echoway Farms Inc Albany	56	44	192.7	187	209	182	8,763	367	273	HO
68 Postma Brothers Farms Ltd Kinkora	56	50	190.7	177	205	190	8,386	359	285	HO
69 Hooper Farms North Milton	46	37	188.7	181	204	181	8,372	350	266	HO
70 Ayr Bay Farms St-Peters Bay	47	37	182.3	183	189	175	6,426	274	202	AY
71 Arsenault Acres St. Nicholas	87	64	176.3	175	185	169	8,073	317	247	HO
72 Maplewood Farms Charlottetown	32	28	175.7	174	181	172	8,359	322	262	HO
73 Dwight MacLean Miscouche	55	44	175.0	167	182	176	7,877	320	264	HO
74 Valley Dell Farms Charlottetown	31	26	163.3	165	168	157	7,886	298	238	HO
75 Driscoll Farms Donagh	75	72	159.3	160	163	155	7,570	286	233	HO
76 Cassie Glen Holsteins Milton Station	39	34	150.7	147	160	145	7,141	286	222	HO

\* For Ayrshire, Holstein and Jersey breeds, a minimum of 10 publishable lactations is required for a publishable herd average; all other breeds require 5.

## NEWFOUNDLAND PUBLISHABLE HERDS\*

Farm Name, Town	Records Started	Publishable Records	Avg BCA	BCA M	BCA F	BCA P	M kg	F kg	P kg	Breed
1 Sunrise Dairy Ltd Musgravetown	250	177	302.3	295	320	292	12,530	507	397	HO
2 Larch Grove Farms Cormack	239	186	263.0	248	279	262	11,199	466	376	HO
3 N & N Farm Ltd Cormack	255	190	262.3	250	281	256	11,453	476	373	HO
4 Brophy's Dairy Farm Daniel's Harbour	212	179	248.3	234	269	242	10,637	454	349	HO
5 Cornerstone Farm Cormack	165	106	215.0	208	232	205	9,222	383	291	HO